



jordan fishwick

Frith View Chapel-En-Le-Frith High Peak



Frith View Chapel-En-Le-Frith High Peak SK23 9TT

Guide Price £250,000



The Property

Situated on the outskirts of Chapel-en-le-Frith, this recently refurbished three bedroom semi-detached property is located on Frith View and benefits from close proximity to open countryside whilst still being conveniently located to the town centre. Chapel-en-le-Frith offers an excellent range of local amenities including Chapel-en-le-Frith High School, leisure centre and train station, all within walking distance of the property. The accommodation to the ground floor comprises an entrance porch/cloakroom and an expansive living room, flooded with natural light as it benefits from a large south-facing window. The sleek and modern kitchen/diner offers ample space for entertaining and benefits from a convenient alcove, currently housing the fridge. The property features a family bathroom, two double bedrooms and a versatile third bedroom, ideal for a nursery or those seeking the increasingly in demand work-from-home space. The master bedroom has generous floor space, easily accommodating a large dressing area and once again enjoys beautiful natural light. Externally, the property has driveway parking, a single garage, and a secure rear garden featuring a patio area and fenced lawn. Viewing is highly recommended to fully appreciate all this home has to offer.



- Recently Refurbished
- Easy Access To Local Amenities
- Three Bedroom Property
- Semi-Detached
- Brilliant Commuter Links
- Open Plan Kitchen/Diner
- Secure Rear Garden
- Driveway And Garage

Postcode

SK23 9TT

EPC Rating

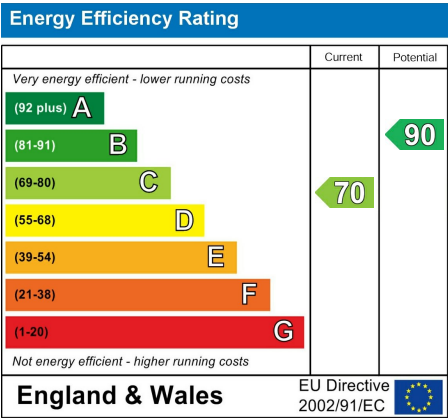
C

Local Authority

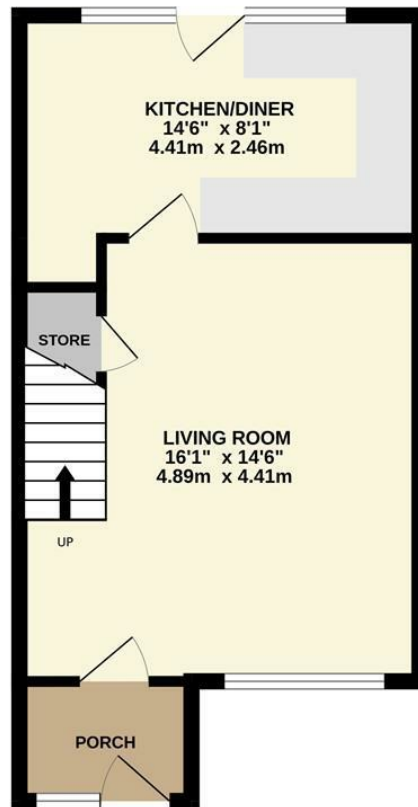
High Peak

Council Tax

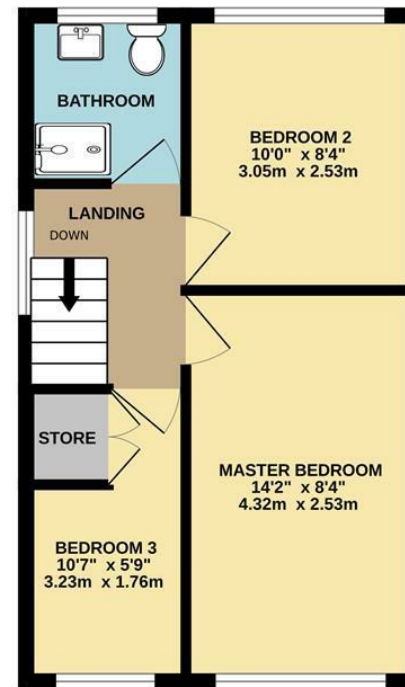
B



GROUND FLOOR



1ST FLOOR



Whilst every attempt has been made to ensure the accuracy of the floorplan contained here, measurements of doors, windows, rooms and any other items are approximate and no responsibility is taken for any error, omission or mis-statement. This plan is for illustrative purposes only and should be used as such by any prospective purchaser. The services, systems and appliances shown have not been tested and no guarantee as to their operability or efficiency can be given.
Made with Metropix ©2026



These particulars are believed to be accurate but they are not guaranteed and do not form a contract. Neither Jordan Fishwick nor the vendor or lessor accept any responsibility in respect of these particulars, which are not intended to be statements or representations of fact and any intending purchaser or lessee must satisfy himself by inspection or otherwise as to the correctness of each of the statements contained in these particulars. Any floorplans on this brochure are for illustrative purposes only and are not necessarily to scale.

Offices at: Chorlton, Didsbury, Disley, Hale, Glossop, Macclesfield, Manchester Deansgate, Manchester Whitworth Street, New Mills, Sale, Wilmslow and Withington

14 Market St, Disley, Cheshire, Stockport SK12 2AA

01663 767878

disley@jordanfishwick.co.uk

www.jordanfishwick.co.uk